

The BGC Concrete Architectural Range of exposed, polished and honed concrete brings a striking architectural feel to every project.

A new and exciting range of exposed, polished and honed mixes are now available incorporating a variety of coarse aggregate, sand and cement types.

All mixes are available with coloured oxides and most importantly polished mixes include shrinkage reducing admixtures as standard.

Attention to detail is essential in achieving a professional finish. BGC Concrete representatives are available to discuss your project prior to pouring to ensure that detail and mix selection are fully assessed.

Enjoy the benefits of BGC Concrete Architectural Range of mixes on your next project.

For more information and display locations, refer to bgcconcrete.com.au



BGC Concrete Architectural Range Exposed, Polished & Honed

For obligation free advice on your next project, contact us on 08 6220 4700.

The BGC Concrete Architectural Range

Exposed, Polished & Honed Concrete



Photography: Joel Barbitta D-MAX Photography | Architects: spaceagency



T 08 6220 4700
PO Box 7223 Cloisters Square Perth WA 6850
concrete@bgc.com.au bgcconcrete.com.au

Exposed Polished Honed

bgcconcrete.com.au

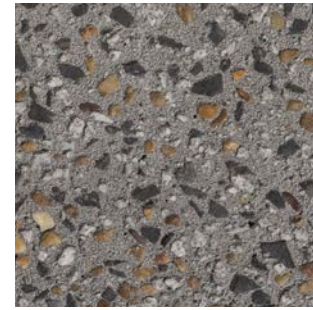
Exposed Series

14mm

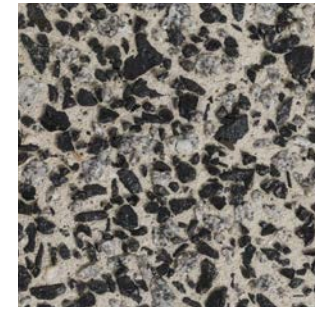
14mm aggregate



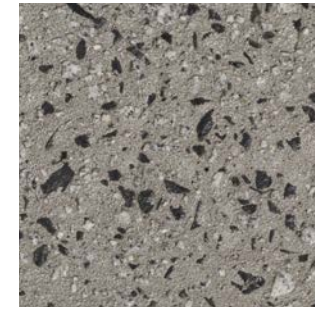
A129



A157



C230



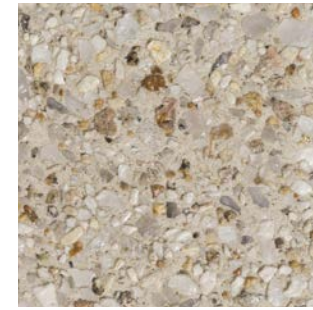
A137



A133



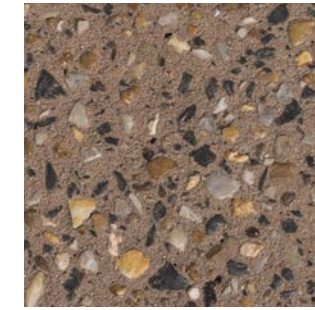
A154



C175



C233



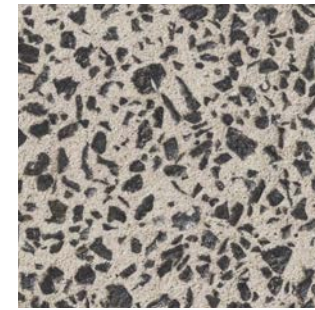
A151



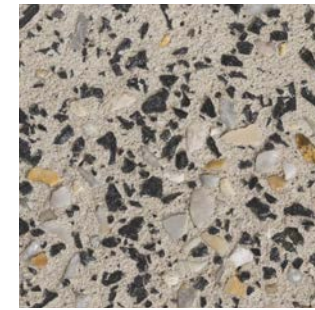
A228



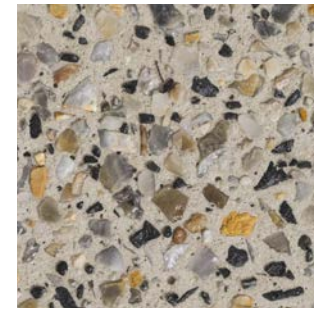
A229



C167



C172



C231



A125



C161



C163



C232

7mm

7mm aggregate



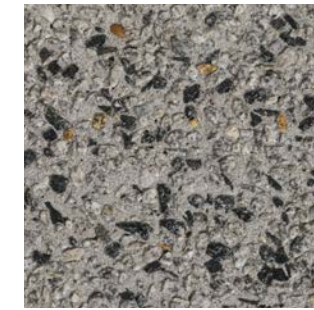
A220



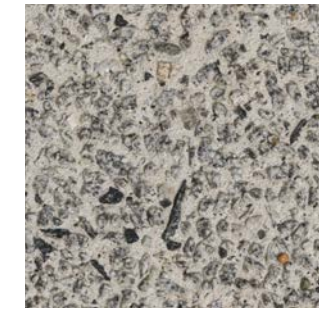
A222



C221



A226



C227

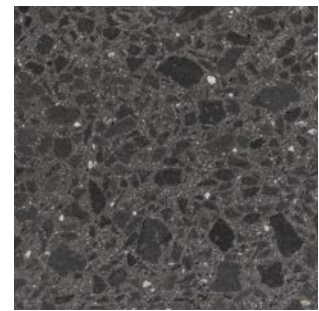


C219

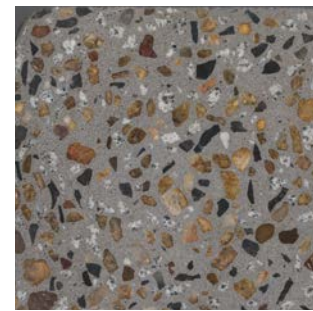
Polished / Honed Series

14mm

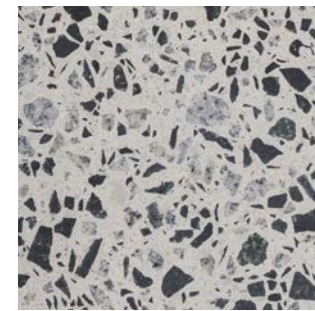
14mm aggregate



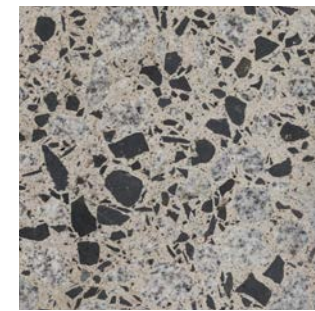
A129



A157



C230



A137



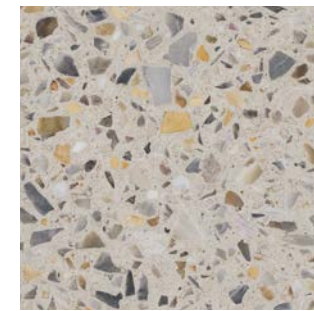
A133



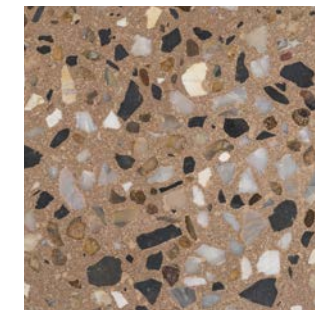
A154



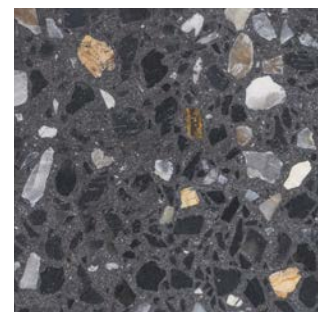
C175



C233



A151



A228



A229



C167



C172



C231



A125



C161



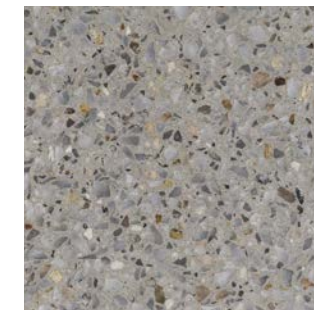
C163



C232

7mm

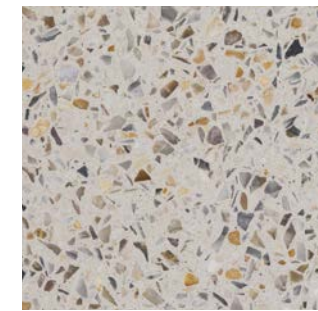
7mm aggregate



A220



A222



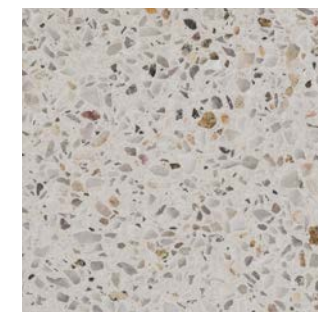
C221



A226



C227



C219

BGC Concrete's standard range of exposed, polished and honed concrete mixes have been photographed to provide an indication of available colours. Variations can occur in shade and texture as a result of print quality. Although we take all care and attention, we do not guarantee colour consistency throughout a particular project.

Please ensure the BGC Concrete Architectural Range of concrete mixes are installed by a suitably qualified contractor. BGC Concrete does not accept responsibility for the surface texture or finish achieved by installers. Ensure that loads are ordered in a timely manner and the correct amount is ordered as "plus" loads are to be avoided. The construction joint layout and spacing should accommodate design and shrinkage considerations. When ordering please quote the mix code. Finish and surface texture variations are caused by many factors which are beyond our control including the amount of water added on site, the surface retarder used vis-a-vis aggregate size, timing and techniques used in finishing, the duration between pours, concrete age, the curing environment and variations within a raw material source. Some quartz products are subject to staining, acid washing and sealing of these mixes is required.

BGC Concrete endorses safe environmental practices. If washing concrete please ensure any slurry is contained and disposed of thoughtfully. Washed water should not be allowed to enter the drainage system or watercourse.